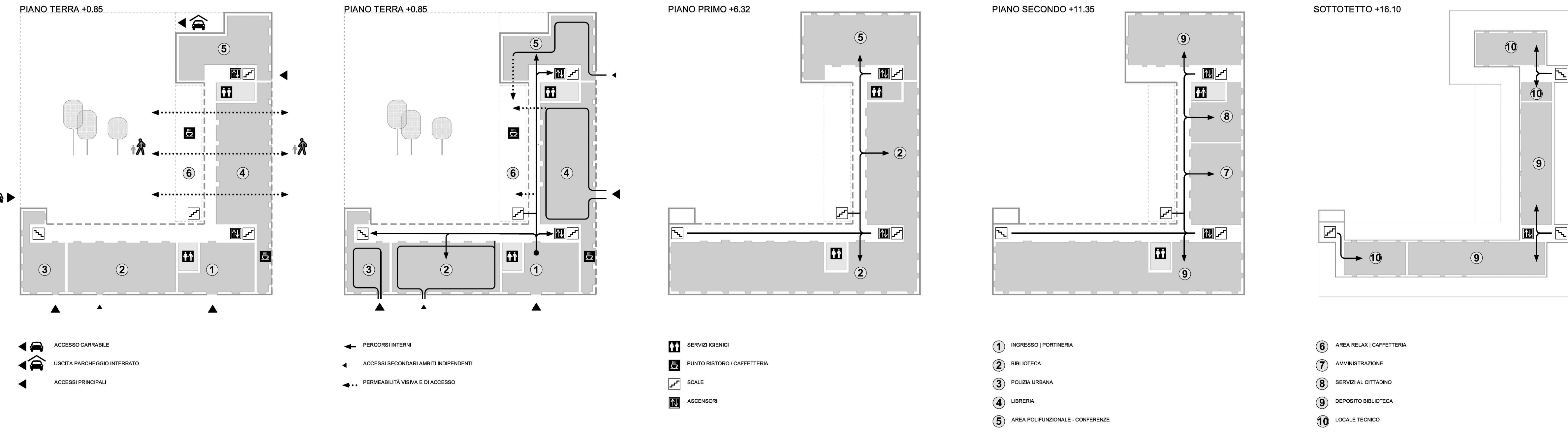
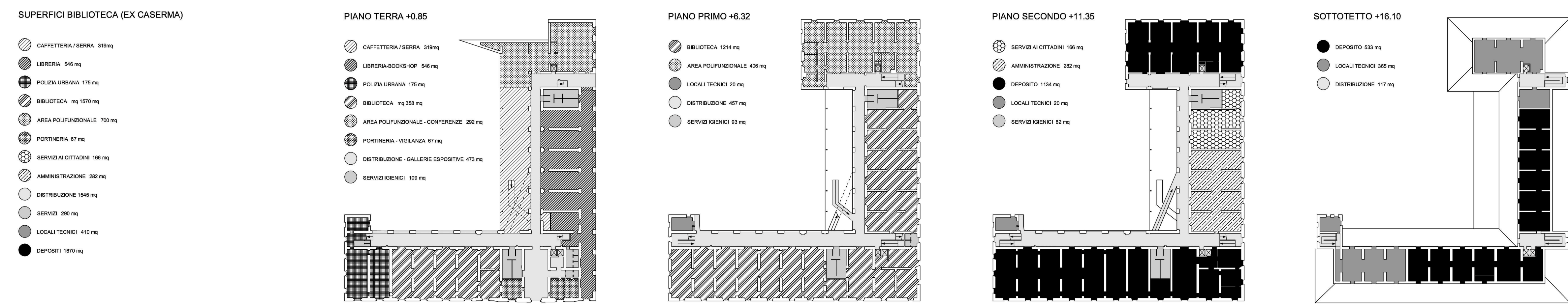


### PERCORSI E LAYOUT FUNZIONALE

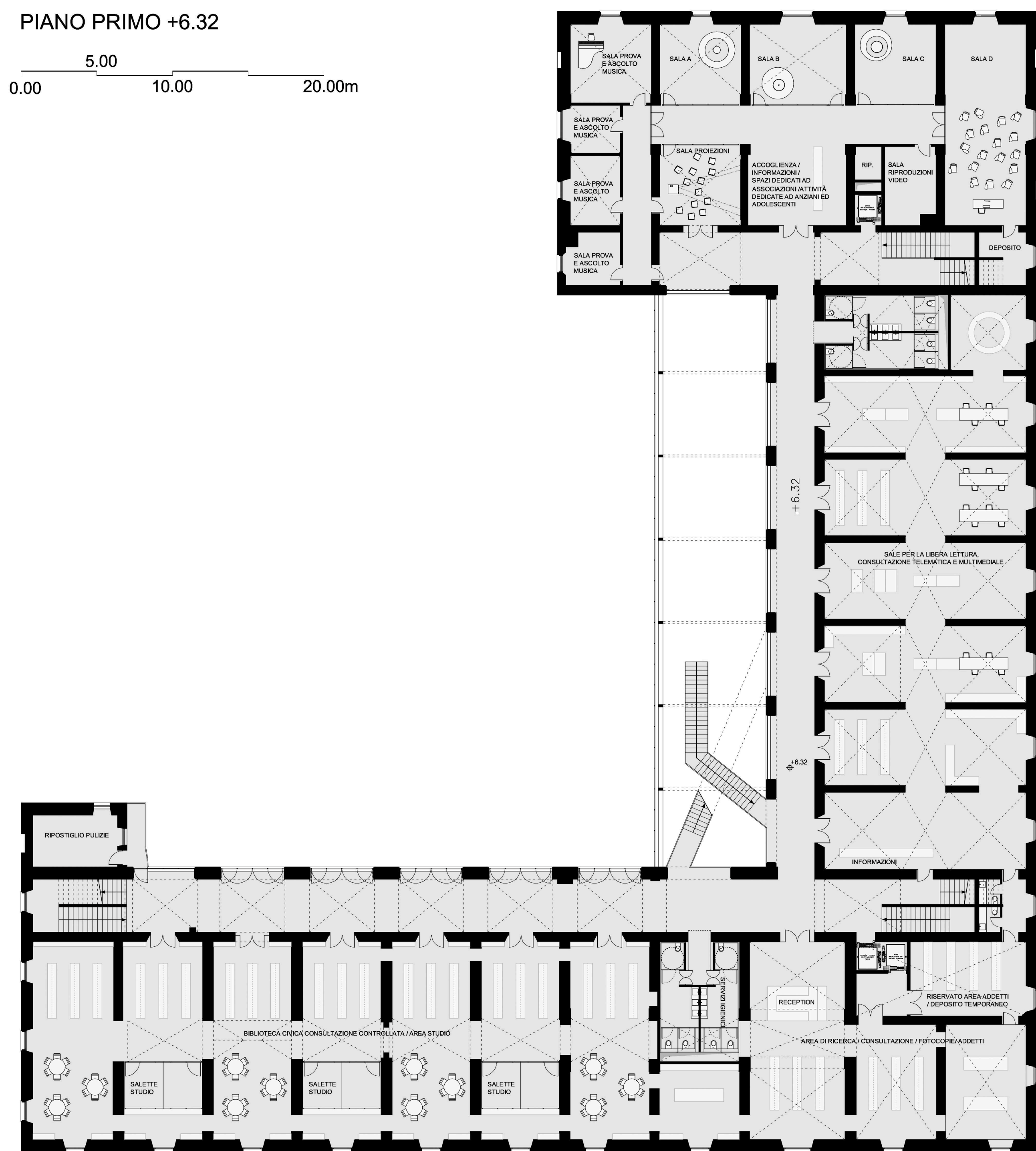


### ANALISI SUPERFICI

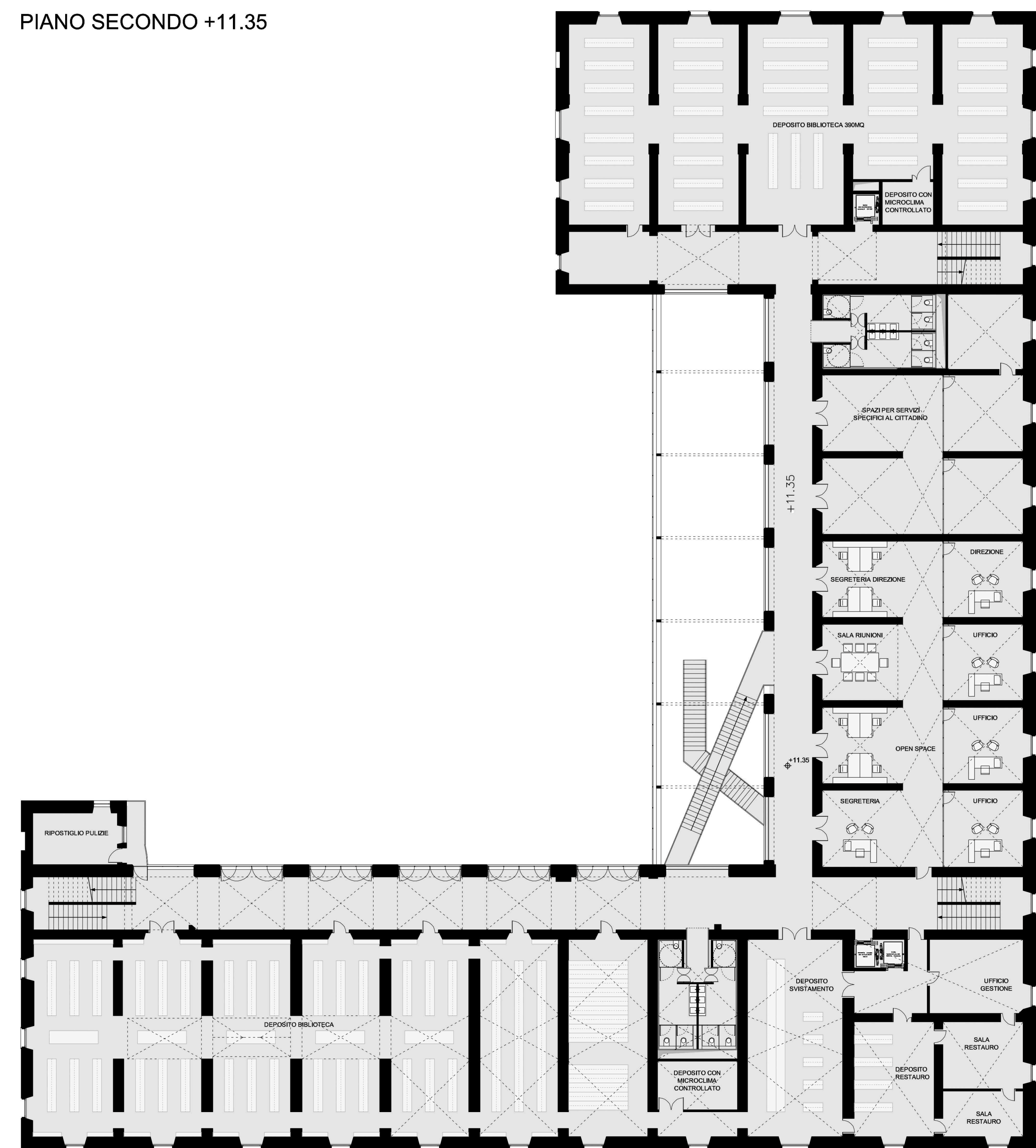


### PIANO PRIMO +6.32

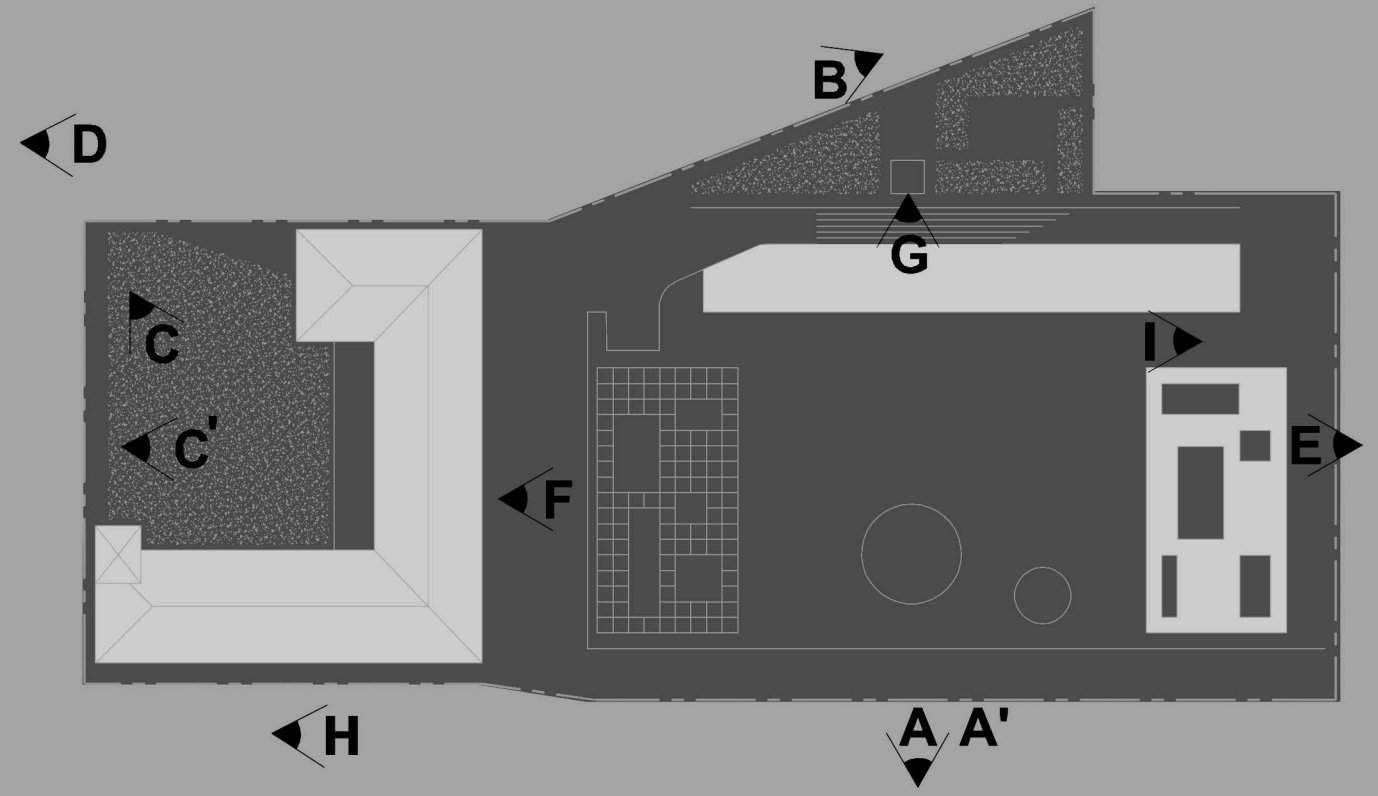
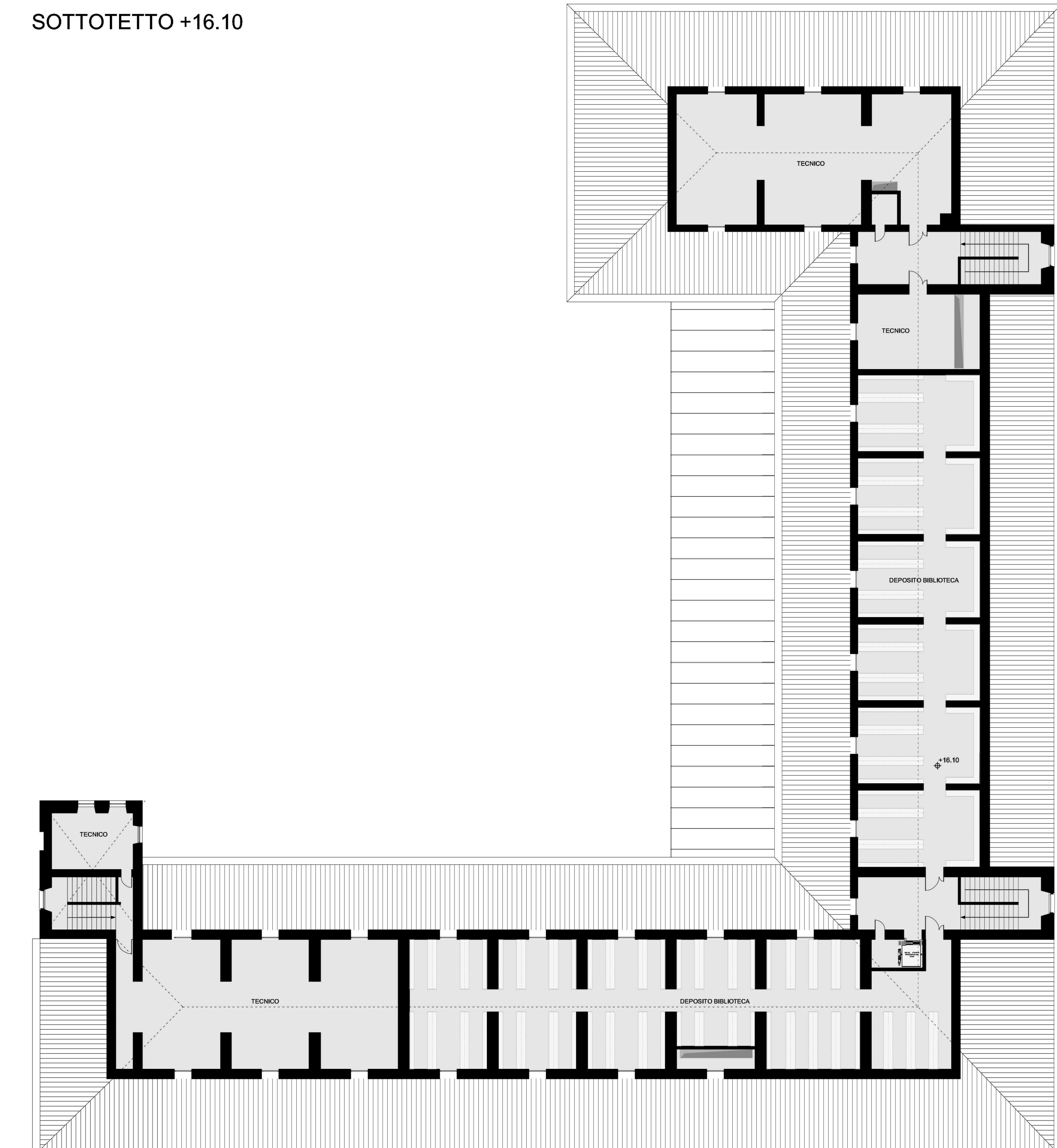
0.00 5.00 10.00 20.00m



### PIANO SECONDO +11.35



### SOTTOTETTO +16.10



# TRHG763D

CONCORSO INTERNAZIONALE DI PROGETTAZIONE  
 PER LA RIQUALIFICAZIONE URBANISTICA  
 E FUNZIONALE DEL COMPARTO DI PIAZZA  
 DELLA REPUBBLICA - SUB AMBITO 1 -  
 PIAZZA DELLA REPUBBLICA ED EX CASERMA

## TAV 06